



Vision

"The global leader in accelerating strategic alignment and execution – innovating how organizations learn, change and improve."

BTS is a world leading strategy implementation firm. The company accelerates execution by ensuring the workforce is aligned to the strategy, has the right mindset, and has mastered the capabilities needed to deliver business results. BTS leverages customized business simulations and experiential learning initiatives to develop the business acumen, leadership and sales capabilities necessary for superior strategy execution. Partnering with today's leading corporations, BTS consultants bring passion and deep industry expertise to deliver high-impact solutions that help clients achieve better results, faster.

Headquartered in Stockholm, Sweden, BTS has more than 350 professionals in 29 offices located on six continents. Partnering with nearly 400 organizations, including more than 30 of the world's largest corporations, BTS's major clients are some of the most respected names in business: Anglo American, AT&T, Chevron, Coca-Cola, Ericsson, HP, Rio Tinto, Telefonica, and Unilever.

BTS is a public company listed on the Nasdaq OMX Stockholm exchange and trades under the symbol BTS b.

Unchanged earnings during third quarter

January 1 – September 30, 2013

- Net turnover amounted to MSEK 516.7 (556.7). Adjusted for changes in foreign exchange rates, growth was –3 percent.
- Profit before tax decreased by 16 percent to MSEK 52.7 (62.7).
- Profit after tax decreased by 13 percent to MSEK 35.4 (40.8).
- Earnings per share decreased by 16 percent to SEK 1.90 (2.26).

The third quarter 2013

- Net turnover amounted to MSEK 164.7 (178.4). Adjusted for changes in foreign exchange rates, growth was –4 percent.
- Profit before tax decreased by 0.3 percent to MSEK 17.6 (17.7).
- Profit after tax increased by 7 percent to MSEK 12.6 (11.8).
- Earnings per share increased by 5 percent to SEK 0.68 (0.65).

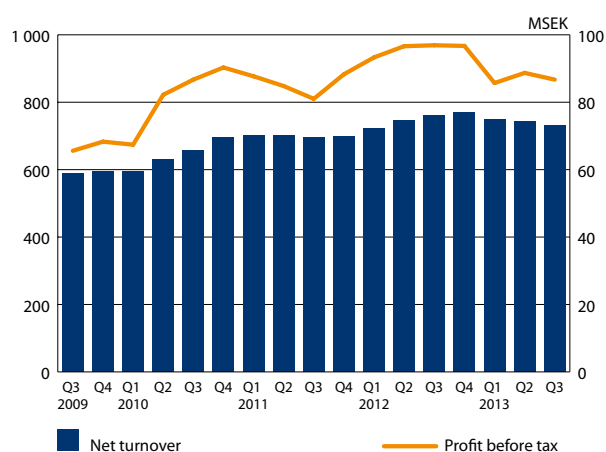
As previously announced, BTS completed the acquisition during the period of all the businesses in the Danish company Wizerize A/S. The acquisition creates new opportunities to offer digital-enabled solutions that are built on social and mobile platforms of the future, complementing our current range of products and services very well.

New clients secured during the first nine months included Airbus, Banco Santander, Bankia, Belk Inc, Cepsa, DBS Bank, Genworth, Hempel, Hoerbiger, ITM Brazil, Novartis, TE Connectivity and Telefonía Mexico.

Considering that it takes more time to turn the trend in North America, profit before tax for the full-year 2013 is expected to be lower than the preceding year, which differs from the previous report when profit before tax was expected to be in line with the preceding year.

NET TURNOVER AND PROFIT BEFORE TAX

Rolling 12 months



Catalysts for Profitability and Growth

CEO COMMENTS

Unchanged earnings during third quarter

The third quarter contained both positive and negative news – BTS Europe and BTS Other markets displayed good earnings, but our major BTS North America unit displayed sharply negative growth with earnings halved.

It is taking longer to reverse the trend in North America than we assumed, but we expect that the intensified sales efforts will result in a more positive performance during next year.

We see a positive development in emerging markets. We made investments during the year to establish BTS in the attractive markets close to Arabian Gulf, and we have gained several new clients and major assignments there. We can happily confirm that the reorganization of our Australian operations is yielding results – revenue and profits are growing again after four weak quarters.

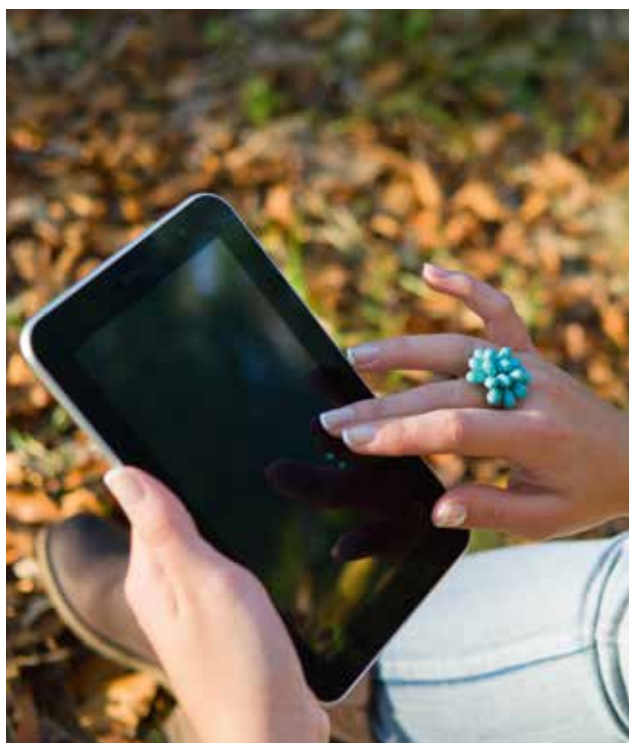
BTS Europe continues to increase its revenue and earnings.

Overall, we view the current performance as a temporary decline in BTS' growth of many years.

Stockholm, November 7, 2013



Henrik Ekelund
President and CEO of BTS Group AB (publ)



OPERATIONS

Turnover

BTS' net turnover amounted to MSEK 516.7 (556.7) during the nine-month period. Adjusted for changes in foreign exchange rates, growth was –3 percent.

Growth varied among the units: BTS Europe 23 percent, BTS Other markets 8 percent, APG 5 percent and BTS North America –17 percent (growth figure measured in local currencies).

Earnings

Operating profit before amortization of intangible assets (EBITA) decreased by 17 percent during the nine-month period and amounted to MSEK 53.6 (64.5). Operating profit (EBIT) decreased by 17 percent during the nine-month period and amounted to MSEK 52.6 (63.4). Operating profit during the nine-month period was affected by MSEK 1.0 (1.1) for amortization of intangible assets attributable to acquisitions.

The operating margin before amortization of intangible assets (EBITA margin) was 10 (12) percent. The operating margin (EBIT margin) was 10 (11) percent.

The group's profit before tax for the nine-month period decreased by 16 percent to MSEK 52.7 (62.7).

Earnings were positively impacted by improved earnings in BTS Europe and APG. Changes in foreign exchange rates negatively impacted earnings during the nine-month period by MSEK 2.6.

The third quarter

BTS' net turnover during the third quarter amounted to MSEK 164.7 (178.4). Adjusted for changes in foreign exchange rates, growth was -4 percent.

Operating profit before amortization of intangible assets (EBITA) decreased by 4 percent during the third quarter and amounted to MSEK 17.7 (18.4). Operating profit during the third quarter was affected by MSEK 0.3 (0.4) for amortization of intangible assets attributable to acquisitions. Operating profit (EBIT) decreased by 3 percent to MSEK 17.4 (18.0).

The operating margin before amortization of intangible assets (EBITA margin) was 11 (10) percent. The operating margin (EBIT margin) was 11 (10) percent.

The group's profit before tax for the third quarter decreased by 0.3 percent to MSEK 17.6 (17.7).

Earnings were positively impacted by improved earnings in BTS Europe, BTS Other markets and APG. Earnings were negatively impacted by weaker earnings in BTS North America.

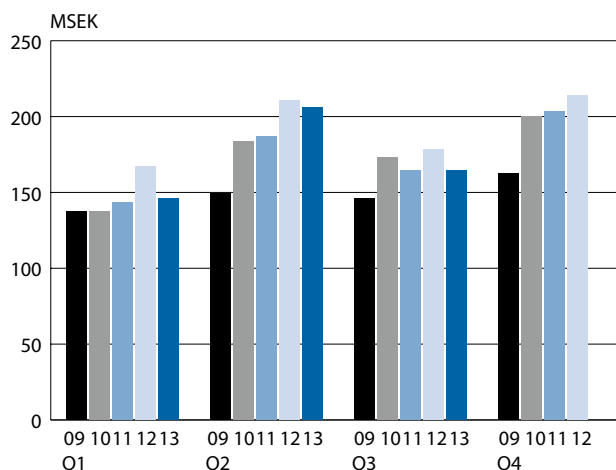
Market development

The market during the first nine months was characterized by continued caution among companies regarding investments in the kind of services which BTS offers.

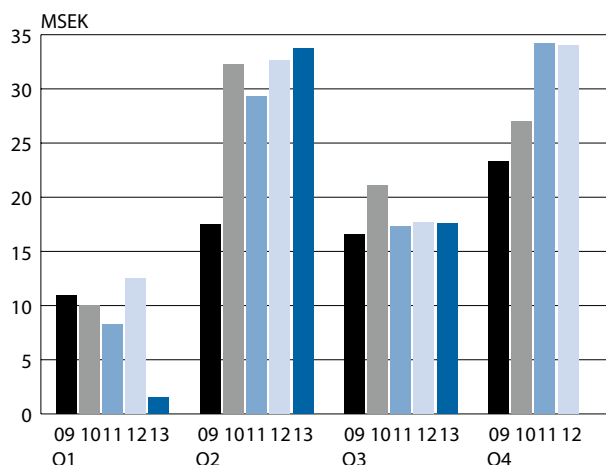
Assignments and new clients

New clients secured during the first nine months included Airbus, Banco Santander, Bankia, Belk Inc, Cepsa, DBS Bank, Genworth, Hempel, Hoerbiger, ITM Brazil, Novartis, TE Connectivity and Telefónica Mexico.

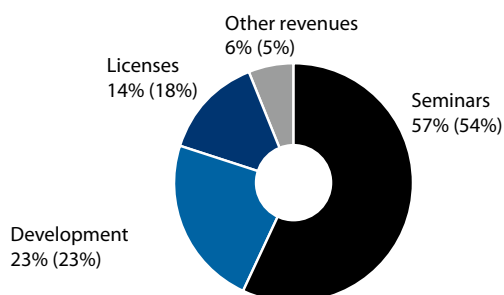
NET TURNOVER BY QUARTER



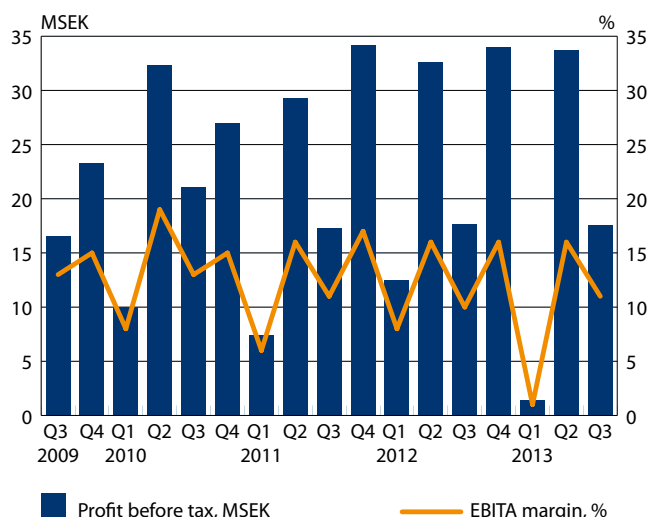
PROFIT BEFORE TAX BY QUARTER



NET TURNOVER BY SOURCE OF REVENUE
JANUARY 1–SEPTEMBER 30, 2013 (2012)



PROFIT BEFORE TAX AND OPERATING MARGIN (EBITA)
BY QUARTER



OPERATIVE UNITS

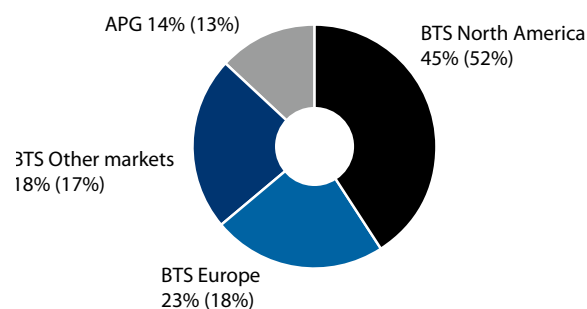
BTS North America includes BTS' operations in North America excluding APG.

BTS Europe includes the operations in Sweden, Finland, France, the Netherlands, the UK, Belgium, Germany and Spain.

BTS Other markets consists of the operations in Australia, Singapore, Thailand, Taiwan, South Korea, China, Japan, India, Mexico, Brazil and South Africa.

APG consists of the operations in Advantage Performance Group.

NET TURNOVER PER OPERATIVE UNIT
JANUARY 1–SEPTEMBER 30, 2013 (2012)



NET TURNOVER PER OPERATIVE UNIT

| MSEK | July–Sept 2013 | July–Sept 2012 | Jan–Sept 2013 | Jan–Sept 2012 | Oct–Sept 2012/13 | Jan–Dec 2012 |
|-------------------|-------------------|-------------------|------------------|------------------|---------------------|-----------------|
| BTS North America | 67.4 | 85.6 | 229.8 | 287.8 | 327.8 | 385.8 |
| BTS Europe | 37.6 | 33.4 | 117.9 | 98.5 | 169.6 | 150.2 |
| BTS Other markets | 37.4 | 36.4 | 95.2 | 96.8 | 130.3 | 131.9 |
| APG | 22.3 | 23.0 | 73.8 | 73.6 | 102.8 | 102.6 |
| Total | 164.7 | 178.4 | 516.7 | 556.7 | 730.5 | 770.5 |

OPERATING PROFIT BEFORE AMORTIZATION OF INTANGIBLE ASSETS
(EBITA) PER OPERATIVE UNIT

| MSEK | July–Sept 2013 | July–Sept 2012 | Jan–Sept 2013 | Jan–Sept 2012 | Oct–Sept 2012/13 | Jan–Dec 2012 |
|-------------------|-------------------|-------------------|------------------|------------------|---------------------|-----------------|
| BTS North America | 5.7 | 11.5 | 29.1 | 48.6 | 43.9 | 63.2 |
| BTS Europe | 6.2 | 1.8 | 16.9 | 6.6 | 31.3 | 21.3 |
| BTS Other markets | 5.8 | 5.4 | 7.7 | 10.5 | 12.2 | 14.9 |
| APG | 0.0 | -0.3 | -0.1 | -1.2 | 0.5 | -0.6 |
| Total | 17.7 | 18.4 | 53.6 | 64.5 | 87.9 | 98.8 |

BTS North America

Net turnover for BTS' North American operations amounted to MSEK 229.8 (287.8) during the nine-month period. Adjusted for changes in foreign exchange rates, revenue decreased by 17 percent. Operating profit before amortization of intangible assets (EBITA) amounted to MSEK 29.1 (48.6) during the nine-month period. The operating margin before amortization of intangible assets (EBITA margin) was 13 (17) percent.

Net turnover during the third quarter amounted to MSEK 67.4 (85.6). Adjusted for changes in foreign exchange rates, revenue decreased by 19 percent. Operating profit before amortization of intangible assets (EBITA) amounted to MSEK 5.7 (11.5) during the third quarter. The operating margin before amortization of intangible assets (EBITA margin) was 8 (13) percent.

A number of major clients deferred their investments, which resulted in a weak third quarter. The intensified sales efforts are expected to produce an improved performance during 2014.

BTS Europa

Net turnover for BTS Europe amounted to MSEK 117.9 (98.5) during the nine-month period. Adjusted for changes in foreign exchange rates, revenue increased by 23 percent. Operating profit before amortization of intangible assets (EBITA) amounted to MSEK 16.9 (6.6) during the nine-month period. The operating margin before amortization of intangible assets (EBITA margin) was 14 (7) percent.

Net turnover during the third quarter amounted to MSEK 37.6 (33.4). Adjusted for changes in foreign exchange rates, revenue increased by 14 percent. Operating profit before amortization of intangible assets (EBITA) amounted to MSEK 6.2 (1.8) during the third quarter. The operating margin before amortization of intangible assets (EBITA margin) was 16 (5) percent.

BTS Europe continues to display a positive trend, with strong growth in revenue and earnings.

BTS Other markets

Net turnover for BTS Other markets amounted to MSEK 95.2 (96.8) during the nine-month period. Adjusted for changes in foreign exchange rates, revenue increased by 8 percent. Operating profit before amortization of intangible assets (EBITA) amounted to MSEK 7.7 (10.5) during the nine-month period. The operating margin before amortization of intangible assets (EBITA margin) was 8 (11) percent.

Net turnover during the third quarter amounted to MSEK 37.4 (36.4). Adjusted for changes in foreign exchange rates, revenue increased by 14 percent. Operating profit before amortization of intangible assets (EBITA) amounted to MSEK 5.8 (5.4) during the third quarter. The operating margin before amortization of intangible assets (EBITA margin) was 16 (15) percent.

All units performed well. Investments to establish BTS' presence in the attractive Dubai market and also in surrounding markets have affected earnings. The reorganization carried out in Australia has resulted in growth and an improvement in earnings during the third quarter.

APG

Net turnover amounted to MSEK 73.8 (73.6) during the nine-month period. Adjusted for changes in foreign exchange rates, revenue increased by 5 percent. Operating profit before amortization of intangible assets (EBITA) amounted to MSEK -0.1 (-1.2) during the nine-month period. The operating margin before amortization of intangible assets (EBITA margin) was 0 (-2) percent.

Net turnover during the third quarter amounted to MSEK 22.3 (23.0). Adjusted for changes in foreign exchange rates, revenue was unchanged. Operating profit before amortization of intangible assets (EBITA) amounted to MSEK 0.0 (-0.3) during the third quarter. The operating margin before amortization of intangible assets (EBITA margin) was 0 (-1) percent.

APG is continuing to invest in order to implement its new strategy. Earnings were unchanged compared to the preceding year.



Financial position

BTS' cash flow from operating activities amounted to MSEK 3.8 (32.7) during the nine-month period. The weak cash flow relates exclusively to a decrease in current liabilities. During the third quarter, cash flow from operating activities amounted to MSEK 40.8 (27.9).

Available cash and cash equivalents amounted to MSEK 64.6 (70.5) at the end of the period. The company's interest-bearing loans, which relate to previously completed acquisitions, amounted to MSEK 0 (16.3) at the end of the period.

BTS' solidity was 72 (65) percent at the end of the period.

The company had no outstanding conversion loans at the balance sheet date.

Employees

The number of employees in BTS Group AB as of September 30 was 374 (382).

The average number of employees during the nine-month period was 377 (358).

Parent Company

The company's net turnover amounted to MSEK 1.4 (1.5) and profit after net financial items amounted to MSEK 9.3 (22.5). Cash and cash equivalents amounted to MSEK 0 (0).

Outlook for 2013

Considering that it takes more time to turn the trend in North America, profit before tax for the full-year 2013 is expected to be lower than the preceding year, which differs from the previous report when profit before tax was expected to be in line with the preceding year.

Risks and uncertainties

The group's material risks and uncertainties include market and business risks, operational risks as well as financial risks. Business and market risks may relate to larger customer exposures to particular sectors and companies as well as sensitivity to market conditions. Operational risks relate to dependence on people, supply of competence and intellectual property and that BTS meets the high demands imposed by clients in respect of quality. Financial risks mainly relate to foreign exchange and credit risks.

The management of risks and uncertainties is described in the Annual Report for 2012. BTS is considered to have a good diversification of risks as regards companies and sectors and the operational risks are deemed to be managed in a structured manner through well-established processes. The day-to-day exposure to changes in exchange rates is limited since revenues and costs mainly relate to the same currency in each market and the credit risk is limited as BTS only accepts creditworthy counterparties. No new material risks or uncertainties are deemed to have arisen during 2013.

Critical estimates and assumption

In order to prepare the financial statements in conformity with IFRS the Corporate Management is required make estimates and assumptions that affect the application of the accounting policies and the recognized amounts of assets, liabilities, revenue and costs. The estimates and assumptions are based on historical experience and a number of other factors that are regarded as reasonable under the existing circumstances. Actual outcomes can deviate from these estimates and assessments. Estimates and assumptions are reviewed regularly.

Accounting policies

This interim report has been prepared in accordance with IAS 34, Interim Financial Reporting. The consolidated financial statements have been prepared in accordance with the International Financial Reporting Standards (IFRS) as adopted by the EU, RFR 1 Supplementary Accounting Rules for Groups and the Swedish Annual Accounts Act. The parent company's statements are prepared in accordance with RFR 2, Accounting for Legal Entities and the Annual Accounts Act. New or revised IFRS and interpretations from IFRIC have not had any effect on the group's or the parent company's results of operations or financial position.

Nominating Committee

As previously announced, a nominating committee has been appointed. BTS' two largest shareholders in consultation with the Chairman of the Board Michael Grindfors have appointed the following persons to serve on the nominating committee:

- Anders Dahl, Master of Business Administration, representing Henrik Ekelund
- Michael Grindfors, Chairman of the Board, BTS Group AB
- Stefan af Petersens, BTS Group AB, representing himself.

Anders Dahl has been appointed chairman of the nominating committee.

The nominating committee is tasked with proposing candidates for the Board of Directors but also with submitting proposals for remuneration to Board members and auditors.

Shareholders of BTS Group AB are welcome to submit proposals to the chairman of the nominating committee at the following address: BTS Group AB, Grevgatan 34, 114 53 Stockholm.

Nomination of Board members is intended to be announced in the notice convening the next annual general meeting.

Future reporting dates

| | |
|----------------------|-------------------|
| Year-end report 2013 | February 13, 2014 |
| Annual Report 2013 | April 2014 |

Stockholm, November 7, 2013

Henrik Ekelund
Chief Executive Officer

This report has not been reviewed by BTS' auditor.

Contact information

| | | |
|----------------|---|--|
| Henrik Ekelund | President and CEO | Phone: +46 8 587 070 00 |
| Stefan Brown | CFO | Phone: +46 8 587 070 62 |
| Thomas Ahlerup | Senior Vice President, Investor and Corporate Communications | Phone: +46 8 587 070 02 Mobile: +46 768 966 300 |

For additional information visit our website www.bts.com

BTS Group AB (publ)
Grevgatan 34
114 53 Stockholm
SWEDEN

Phone +46 8 587 070 00
Fax +46 8 587 070 01
Corporate registration number: 556566-7119

GROUP INCOME STATEMENT, SUMMARY

| KSEK | July–Sept 2013 | July–Sept 2012 | Jan–Sept 2013 | Jan–Sept 2012 | Oct–Sept 2012/13 | Jan–Dec 2012 |
|--|-------------------|-------------------|------------------|------------------|---------------------|-----------------|
| Net turnover | 164,749 | 178,437 | 516,708 | 556,714 | 730,542 | 770,548 |
| Operating expenses | –146,017 | –158,602 | –458,672 | –488,031 | –636,613 | –665,972 |
| Depreciation tangible assets | –1,005 | –1,473 | –4,454 | –4,218 | –5,998 | –5,761 |
| Amortization intangible assets | –344 | –357 | –1,027 | –1,071 | –1,374 | –1,418 |
| Operating profit | 17,383 | 18,005 | 52,555 | 63,394 | 86,558 | 97,396 |
| Financial income and expenses | 238 | –349 | 137 | –680 | 143 | –674 |
| Profit before tax | 17,621 | 17,655 | 52,692 | 62,713 | 86,701 | 96,722 |
| Taxes | –5,047 | –5,899 | –17,320 | –21,887 | –28,414 | –32,981 |
| Profit for the period | 12,574 | 11,756 | 35,372 | 40,826 | 58,286 | 63,741 |
| attributable to equity holders of the parent | 12,574 | 11,756 | 35,372 | 40,826 | 58,286 | 63,741 |
| Earnings per share, before dilution of shares, SEK | 0.68 | 0.65 | 1.90 | 2.26 | 3.14 | 3.53 |
| Number of shares at end of the period | 18,589,870 | 18,048,300 | 18,589,870 | 18,048,300 | 18,589,870 | 18,066,065 |
| Average number of shares before dilution of shares | 18,589,870 | 18,048,300 | 18,589,870 | 18,048,300 | 18,589,870 | 18,057,183 |
| Earnings per share, after dilution of shares, SEK | 0.68 | 0.63 | 1.90 | 2.20 | 3.12 | 3.41 |
| Average number of shares after dilution of shares | 18,589,870 | 18,591,561 | 18,589,870 | 18,591,561 | 18,589,870 | 18,706,850 |
| Dividend per share, SEK | | | | | | 1.75 |

GROUP STATEMENT OF COMPREHENSIVE INCOME

| KSEK | July–Sept 2013 | July–Sept 2012 | Jan–Sept 2013 | Jan–Sept 2012 | Oct–Sept 2012/13 | Jan–Dec 2012 |
|--|-------------------|-------------------|------------------|------------------|---------------------|-----------------|
| Profit for the period | 12,574 | 11,756 | 35,372 | 40,826 | 58,286 | 63,741 |
| Items that will not be reclassified to Income Statement | – | – | – | – | – | – |
| Items that might be reclassified to Income Statement | | | | | | |
| Income/expenses in shareholders' equity | –14,068 | –18,740 | –10,987 | –19,044 | –11,163 | –19,220 |
| Other comprehensive income for the period, net of tax | –14,068 | –18,740 | –10,987 | –19,044 | –11,163 | –19,220 |
| Total comprehensive income for the period | –1,494 | –6,984 | 24,385 | 21,782 | 47,123 | 44,521 |
| attributable to equity holders of the parent | –1,494 | –6,984 | 24,385 | 21,782 | 47,123 | 44,521 |

GROUP BALANCE SHEET, SUMMARY

| KSEK | 30 Sept 2013 | 30 Sept 2012 | 31 Dec 2012 |
|--|----------------|----------------|----------------|
| Assets | | | |
| Goodwill | 144,551 | 134,928 | 134,684 |
| Other intangible assets | 13,928 | 10,797 | 15,141 |
| Tangible assets | 14,863 | 17,049 | 16,296 |
| Other fixed assets | 7,935 | 8,823 | 7,898 |
| Accounts receivable | 129,825 | 129,256 | 158,479 |
| Other current assets | 91,595 | 93,773 | 91,114 |
| Cash and cash equivalents | 64,576 | 70,541 | 94,910 |
| Total assets | 467,273 | 465,167 | 518,521 |
| Equity and liabilities | | | |
| Equity | 338,758 | 303,202 | 326,563 |
| Non interest bearing – non current liabilities | 236 | 614 | 703 |
| Interest bearing – current liabilities | – | 16,303 | – |
| Non interest bearing – current liabilities | 128,279 | 145,048 | 191,255 |
| Total equity and liabilities | 467,273 | 465,167 | 518,521 |

GROUP CASH FLOW STATEMENT, SUMMARY

| KSEK | Jan–Sept 2013 | Jan–Sept 2012 | Jan–Dec 2012 |
|---|------------------|------------------|-----------------|
| Cash flow from current operations | 3,805 | 32,659 | 59,709 |
| Cash flow from investment activities | –15,055 | –11,629 | –13,862 |
| Cash flow from financing operations | –12,545 | –28,705 | –27,929 |
| Change in liquid funds | –23,795 | –7,675 | 17,918 |
| Liquid funds, opening balance | 94,910 | 84,419 | 84,419 |
| Effect of exchange rate changes on cash | –6,539 | –6,203 | –7,427 |
| Liquid funds, closing balance | 64,576 | 70,541 | 94,910 |

GROUP CHANGES IN CONSOLIDATED EQUITY

| KSEK | Total equity 30 Sept 2013 | Total equity 30 Sept 2012 | Total equity 31 Dec 2012 |
|---|------------------------------|------------------------------|-----------------------------|
| Opening balance | 326,563 | 310,247 | 310,247 |
| Dividend to shareholders | -32,184 | -28,877 | -28,877 |
| New share issue | 19,977 | - | 670 |
| Other | 16 | 50 | 2 |
| Total comprehensive income for the period | 24,385 | 21,782 | 44,521 |
| Closing balance | 338,757 | 303,202 | 326,563 |

GROUP CONSOLIDATED KEY RATIOS

| | July–Sept 2013 | July–Sept 2012 | Jan–Sept 2013 | Jan–Sept 2012 | Oct–Sept 2012/13 | Jan–Dec 2012 |
|--|-------------------|-------------------|------------------|------------------|---------------------|-----------------|
| Net turnover, KSEK | 164,749 | 178,437 | 516,708 | 556,714 | 730,542 | 770,548 |
| EBITA (Profit before interest, tax and amortization), KSEK | 17,727 | 18,361 | 53,582 | 64,465 | 87,932 | 98,814 |
| EBIT (Operating profit), KSEK | 17,383 | 18,005 | 52,555 | 63,394 | 86,558 | 97,396 |
| EBITA margin (Profit before interest, tax and amortization margin), % | 11 | 10 | 10 | 12 | 12 | 13 |
| EBIT margin (Operating margin), % | 11 | 10 | 10 | 11 | 12 | 13 |
| Profit margin, % | 8 | 7 | 7 | 7 | 8 | 8 |
| Operational capital, KSEK | | | | | 261,475 | 229,818 |
| Return on equity, % | | | | | 19 | 20 |
| Return on operational capital, % | | | | | 33 | 42 |
| Solidity at end of the period, % | 72 | 65 | 72 | 65 | 72 | 63 |
| Cash flow, KSEK | 25,374 | 24,226 | -23,795 | -7,675 | 1,231 | 17,351 |
| Liquid funds at end of the period, KSEK | 64,576 | 70,541 | 64,576 | 70,541 | 64,576 | 94,910 |
| Average number of employees | 373 | 368 | 377 | 358 | 378 | 365 |
| Number of employees at end of the period | 374 | 382 | 374 | 382 | 374 | 385 |
| Revenues for the year per employee, KSEK | | | | | 1,933 | 2,111 |

PARENT COMPANY'S INCOME STATEMENT, SUMMARY

| KSEK | July–Sept 2013 | July–Sept 2012 | Jan–Sept 2013 | Jan–Sept 2012 | Oct–Sept 2012/13 | Jan–Dec 2012 |
|-------------------------------|-------------------|-------------------|------------------|------------------|---------------------|-----------------|
| Net turnover | 481 | 380 | 1,416 | 1,540 | 1,856 | 1,980 |
| Operating expenses | –430 | –356 | –1,326 | –1,622 | –1,798 | –2,094 |
| Operating profit | 51 | 24 | 90 | –82 | 58 | –114 |
| Financial income and expenses | –32 | 9,054 | 9,164 | 22,555 | 13,822 | 27,213 |
| Profit before tax | 19 | 9,078 | 9,254 | 22,473 | 13,880 | 27,099 |
| Taxes | 0 | 0 | 0 | 0 | –555 | –555 |
| Profit for the period | 19 | 9,078 | 9,254 | 22,473 | 13,325 | 26,544 |

PARENT COMPANY'S BALANCE SHEET, SUMMARY

| KSEK | 30 Sept 2013 | 30 Sept 2012 | 31 Dec 2012 |
|-------------------------------------|----------------|----------------|----------------|
| Assets | | | |
| Financial assets | 101,976 | 104,464 | 101,976 |
| Other current assets | 556 | 502 | 1,070 |
| Cash and cash equivalents | 241 | – | 1,040 |
| Total assets | 102,773 | 104,966 | 104,086 |
| Equity and liabilities | | | |
| Equity | 102,656 | 98,867 | 103,608 |
| Liabilities | 117 | 6,099 | 478 |
| Total equity and liabilities | 102,773 | 104,966 | 104,086 |

DEFINITIONS

Earnings per share

Earnings attributable to the parent company's shareholders divided by number of shares.

EBITA margin (Profit before interest, tax and amortization margin)

Operating profit before interest, tax and amortization as a percentage of revenues.

EBIT margin (Operating margin)

Operating profit after depreciation as a percentage of revenues.

Profit margin

Profit for the period as a percentage of revenues.

Operational capital

Total balance sheet reduced by liquid funds and other interest bearing assets and reduced by non-interest bearing liabilities.

Return on equity

Profit after tax as a percentage of average equity.

Return on operational capital

Operating profit as a percentage of average operational capital.

Solidity

Equity as a percentage of total balance sheet.

Every care has been taken in the translation of this report. In the event of discrepancies, however, the Swedish original will supersede the English translation.

The global leader in accelerating strategic alignment and execution

BTS is the world leader in customized business simulations and other discovery learning solutions that enable leading organizations to learn, change and improve. The unique BTS process offers fast strategic alignment and rapid capability building to accelerate execution and to improve business results.



Vision

"The global leader in accelerating strategic alignment and execution – innovating how organizations learn, change and improve."



Mission

"We build commitment and capability to accelerate strategy execution and improve business results."



Value Proposition

"We deliver better results, faster. The unique BTS process offers fast strategic alignment and rapid capability building.

Our key differentiators:

- Simulations and experiential solutions – the most effective way to help organizations understand, align and execute on strategies and business initiatives.
- In-depth customization to what is relevant and actionable on the job.
- A results-focused approach that comprehensively and efficiently secures and measures business impact."



Financial Goals

BTS' financial goals shall over time be:

- An organic growth, adjusted for changes in exchange rates, of 20 percent.
- An EBITA margin of 15 percent.
- An equity ratio that does not fall below 50 percent over extended periods.

BTS STOCKHOLM

Grevgatan 34
114 53 Stockholm
Sweden
Tel. +46 8 58 70 70 00
Fax. +46 8 58 70 70 01

BTS AMSTERDAM

Rieker business park
John M. Keynesplein 13
1066 EP Amsterdam
The Netherlands
Tel. +31 (0)20 615 15 14
Fax. +31 (0)20 388 00 65

BTS AUSTIN

401 Congress Avenue,
Suite 1510
Austin, Texas 78701
USA
Tel. +1 512 751 9333
Fax. +1 512 692 1840

BTS BANGKOK

128/27 Phayathai Plaza
Building (4th Floor)
Phyathai Rd. Kwaeng Thung
Phyathai
Khet Ratchathewi Bangkok
10400 Thailand
Tel. +66 2 216 5974

BTS BILBAO

c/o Simon Bolivar 27-1º, oficina
nº 4
48013 Bilbao
Spain
Tel. +34 94 423 5594
Fax. +34 94 423 6897

BTS BRUSSELS

Rue d'Arenberg 44
1000 Brussels
Belgium
Tel. +32 (0) 2 27 415 10
Fax. +32 (0) 2 27 415 11

BTS CHICAGO

200 South Wacker Drive
Suite 925
Chicago, IL 60606
USA
Tel. +1 312 509 4750
Fax. +1 312 509 4781

BTS HELSINKI

Korkeavuorenkatu 47 B
00130 Helsinki
Finland
Tel. +358 9 8622 3600
Fax. +358 9 8622 3611

BTS JOHANNESBURG

267 West Avenue, 1st Floor
0046 Centurion, Gauteng
South Africa
Tel. +27 12 663 6909
Fax. +27 12 663 6887

BTS LONDON

37 Kensington High Street
London W8 5ED
UK
Tel. +44 207 348 18 00
Fax. +44 207 348 18 01

BTS LOS ANGELES

2029 Century Park East
Suite 1400
Los Angeles, CA 90067
USA
Tel. +1 424 202 6952

BTS MADRID

Calle José Abascal 42, 2º dcha
28003 Madrid
Spain
Tel. +34 91 417 5327
Fax. +34 91 555 2433

BTS MELBOURNE

198 Harbour Esplanade,
Suite 404
Docklands VIC 3008
Australia
Tel. +61 3 9670 9850
Fax. +61 3 9670 9569

BTS MEXICO CITY

Moliere 13 – PH
Col. Chapultepec Polanco
C.P. 11560 México, D.F.
Tel. +52 (55) 52 81 69 72
Fax. +52 (55) 52 81 69 72

BTS MUMBAI

901, Techniplex - II, 9th Floor
Goregaon Flyover, Off S.V Road
Goregaon (West), Mumbai
400 062, Maharashtra
India
Tel. +91 22 6196 6800

BTS MUNICH

Theresienhoehe 28
80339 Munich
Germany
Tel. +49 89 244 40 7036

BTS NEW YORK

60 E. 42nd Street, Suite 2434
New York, NY, 10165
USA
Tel. +1 646 378 3730
Fax. +1 646 378 3731

BTS PARIS

12 Rue Vivienne
75002 Paris
France
Tel. +33 1 40 15 07 43

BTS PHILADELPHIA

6 Tower Bridge, Suite 540
181 Washington Street
Conshohocken, PA 19428
USA
Tel. (toll free) +1 800 445 7089
Tel. +1 484 391 2900
Fax. +1 484 391 2901

BTS SAN FRANCISCO

456 Montgomery Street,
Suite 900
San Francisco, CA 94104
USA
Tel. +1 415 362 42 00
Fax. +1 415 362 42 70

BTS SAO PAULO

Rua Geraldo Flausingo
Gomes, 85, cj 42
Brooklin Novo
04575-060 Sao Paulo-SP
Brazil
Tel. +55 11 5505 2070
Fax. +55 11 5505 2016

BTS SCOTTSDALE

9455 E. Ironwood Square Drive,
Ste. 100
Scottsdale, AZ 85258
USA
Tel. +1 480 948 2777
Fax. +1 480 948 2928

BTS SEOUL

1220
24 Sajik-ro 8 gil
Jongno Gu – Seoul
South Korea 110-871
Tel. +82 2 539 7676
Fax. +82 2 2233 4451

BTS SHANGHAI

Suite 506B, West Office Tower
Shanghai Centre
1376 Nanjing Road West
Shanghai 200040
China
Tel. +86 21 6289 8688
Fax. +86 21 6289 8311

BTS SINGAPORE

110 Amoy Street #02-00
Singapore 069930
Tel. +65 6221 2870
Fax. +65 6224 2427

BTS STAMFORD

300 First Stamford Place
Stamford, CT 06902
USA
Tel. +1 203 316 2740
Fax. +1 203 316 2750

BTS SYDNEY

Suite 2, Level 9,
39 Martin Place
Sydney, NSW, 2000,
Australia
Tel. +61 02 8243 0900
Fax. +61 02 9299 6629

BTS TAIPEI

7F, No. 307, Tun-Hua,
North Road
Taipei 105, Taiwan
Tel. +886 2 871 2 3665

BTS TOKYO

Kojimachi Brighton Bldg 2F
6-4-17 Kojimachi
Chiyoda-ku, Tokyo
102-0082, Japan
Tel. +81 3 6272 9973
Fax. +81 3 6672 9974

Advantage Performance Group

700 Larkspur Landing Circle,
Suite 125
Larkspur, CA 94939
USA
Tel. +1 800 494 6646
Fax. +1 415 925 9512



Catalysts for Profitability and Growth

www.bts.com